

# CASALI PRODUCT CATALOGUE

## CASALI MEMBRANES

Image	Code	Description	Size
	CBITBASEP	<b>Dermabit Extra APAO</b> Torch-On Base sheet 3.0mm.	1m x 10m Roll
	CBITBASE	<b>Dermabit Extra APAO</b> Torch-On base sheet 3.0mm. Sand finish. For use on carpark system only. Indent Only	1m x 10m Roll
	CBITG10 CBITB8	<b>Dermabit Extra APAO</b> Torch-On Cap sheet 4.0mm. Mineral chip finish - Black or Natural Slate. Ideal for use in South Island and Central Plateau.	1m x 10m Roll 1m x 8m Roll
	Indent colours Bourgogne slate Red slate Dark brown slate Green slate White slate Min order qty applies	<b>Dermabit Extra APAO</b> Torch-On Cap sheet 4.0mm	1m x 10m Roll
	COLYBASEP	<b>Olympia APP</b> Torch-On Base sheet 3.0mm. For use with Casali Dermafil cap sheet.	1m x 10m Roll
	CFILB10/ CFILC10	<b>Dermafil APP</b> Torch-On Cap sheet 4.0mm. Mineral chip finish in Black or Natural Slate	1m x 10m Roll



CFILGS

**Dermafil APP** Torch-On cap sheet  
5.0mm. Sand finish field sheet. For  
carpark system only

1m x 8m Roll



**Indent colours**







- Bourgogne slate
- Red slate
- Dark brown slate
- Green slate
- White slate

Min order qty applies

**Dermafil APP**  
Torch-On Cap sheet 4.0mm.

1m x 10m Roll

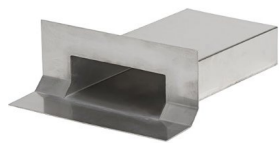
## CASALI - SPECIALTY MEMBRANES

Image	Code	Description	Size
	CASARD	<b>Casali Aderix AS Peel &amp; Stick</b> base sheet 2.5mm for roofing and below ground. For use with Torch applied cap sheets only.	1m x 15m roll
	CASARDSS	<b>Casali Aderix SS Peel &amp; Stick</b> base sheet SS Polyester 2.5mm PE SBS. For roofing use with new peel & stick cap sheets only CASARDSP	1m x 15m roll
	CASARDSP	<b>Casali Aderix SP Peel &amp; Stick</b> cap sheet 4.5mm. Mineral chip finish, Black. For roofing use with new peel & stick base sheets only CASARDSS	1m x 10m Roll
	CGRUV	<b>Casali Vented Torch-On base sheet</b> Suitable for use on concrete substrates.	1m x 20m
	CERADX	<b>Casali Eradix Torch-On</b> Anti root barrier membrane 4.0mm. Mineral chip finish. For use on roof gardens and planter boxes.	1mx 10m
	CVAP3/ CVAP4	<b>Casali Vaporex Torch-On</b> Bitumen Vapour Barrier 3.0mm or 4.0mm with aluminium foil laminated within.	1m x 10m Roll

## OUTLETS AND OVERFLOWS

Image	Code	Description	Size
	ROOFDBE	<b>AquaKnight Clampring Outlet</b> Bottom exit uPVC outlet/ overflow with Stainless Steel domed leaf grate.	80mm - 100mm
	ROOFDB80	<b>AquaKnight Clampring Outlet - Small Flange</b> Bottom exit uPVC outlet/ overflow with Stainless Steel domed leaf grate.	80mm
	ROOFDSE1	<b>AquaKnight Side Exit Clampring Outlet - Small Flange</b> Side exit uPVC outlet/ overflow with Stainless Steel domed leaf grate.	80mm
	ROOFDSE	<b>AquaKnight Side Exit Clampring Outlet - Overflow</b> Side exit uPVC outlet/ overflow with Stainless Steel domed leaf grate.	80mm
	ROOFDBE150	<b>AquaKnight Clampring Outlet Bottom exit</b> uPVC outlet/ overflow with Stainless Steel domed leaf grate	150mm

**CONT - OUTLETS**



CSCUPP

**Aluminium Scupper**  
for torch on membrane roof drainage.

200 x 75mm



COSCUPP

**Aluminium Overflow**  
for torch on membrane roof drainage.

200 x 75mm



CSCUPP1

**Aluminium Scupper**  
for torch on membrane roof drainage.

100 x 100mm



CALIROOF



**Aluminium Roof Vent with Cap**  
for torch on membrane roof ventilation

150mm

## PRIMERS AND SELANTS

Image	Code	Description	Size
	CSPRIME	<b>Dermalprimer</b> Solvent based bitumen primer.	20 litre
	GGBITU	<b>Bit-U-Prime</b> Bitumen based sprayable primer. For use with Torch on and Vapour barrier membranes.	17 kg Canister. Coverage = 260m2 single sided
	JMGRTAC	<b>Roof-Tac Membrane Adhesive</b> Natural rubber based sprayable contact adhesive suitable for bonding PIR insulation.	17kg canister Coverage = 130m2 double sided
	CDRSP	<b>Dermalrubber SP</b> Solvent based liquid waterproofing membrane and root stop.	20 kg
	ARBIT	<b>ARDEX Bituminous Sealant</b> UV stable, solvent based bituminous sealant. For use on and around membrane terminations. Indent Only	300ml Cartridge
	ALLPREPA10 ALLPREPB10 ALLPREPA4 ALLPREPB4	<b>ALLPREP Hydropoxy.</b> 2 part substrate primer, suitable for use on plywood and concrete substrates	10 litre and 4 litre

## ACCESSORIES

Image	Code	Description	Size
	CBFIL30	<b>Bitumen fillet</b>	30mm x 30mm x 1100mm
	ALLBAR100 ALLBAR150	<b>Barrier Tape</b> Foil faced barrier detailing tape	100mm x 20m 150mm x 20m
	VTTERM2.0	Termination Bar	2.0 l/m x 35mm x 2mm

## VAPOUR BARRIER / PIR / COVERBOARD

Image	Code	Description	Size
	JMVAPSA	<b>JM Vapour Barrier Peel &amp; Stick</b> Tri-laminate woven polyethylene, vapor barrier providing moisture protection and low air permeability.	1.1m x 40.8m
	COVERBOARD	<b>Roof Cover Board</b> Use as a protective cover over PIR	6.3mm x 1.2m x 2.4m Weight: 6.2kg per m2
 <p style="text-align: right; margin-right: 50px;">Glass Fabric</p> <p>PIR is an indent product. Please check availability of sizes and lead times prior to ordering</p>	CPIR20	PIR Glass Fabric Faced Thermal Insulation Board - R .93 Embossed Foil Faced POA	20mm x 1.2m x 2.4m
	CPIR30	PIR Glass Fabric Faced Thermal Insulation Board - R 1.4 Embossed Foil Faced POA	30mm x 1.2m x 2.4m
	CPIR40	PIR Glass Fabric Faced Thermal Insulation Board - R 1.8 Embossed Foil Faced POA	40mm x 1.2m x 2.4m
	CPIR50	PIR Glass Fabric Faced Thermal Insulation Board - R 2.3 Embossed Foil Faced POA	50mm x 1.2m x 2.4m
	CPIR75	PIR Glass Fabric Faced Thermal Insulation Board - R 3.5 Embossed Foil Faced POA	75mm x 1.2m x 2.4m
	CPIR100	PIR Glass Fabric Faced Thermal Insulation Board - R 4.6 Embossed Foil Faced POA	100mm x 1.2m x 2.4m
	CPIR140	PIR Glass Fabric Faced Thermal Insulation Board - R 6.4 Embossed Foil Faced POA	140mm x 1.2m x 2.4m
	CPIR150	PIR Glass Fabric Faced Thermal Insulation Board - R 7.0 Embossed Foil Faced POA	150mm x 1.2m x 2.4m